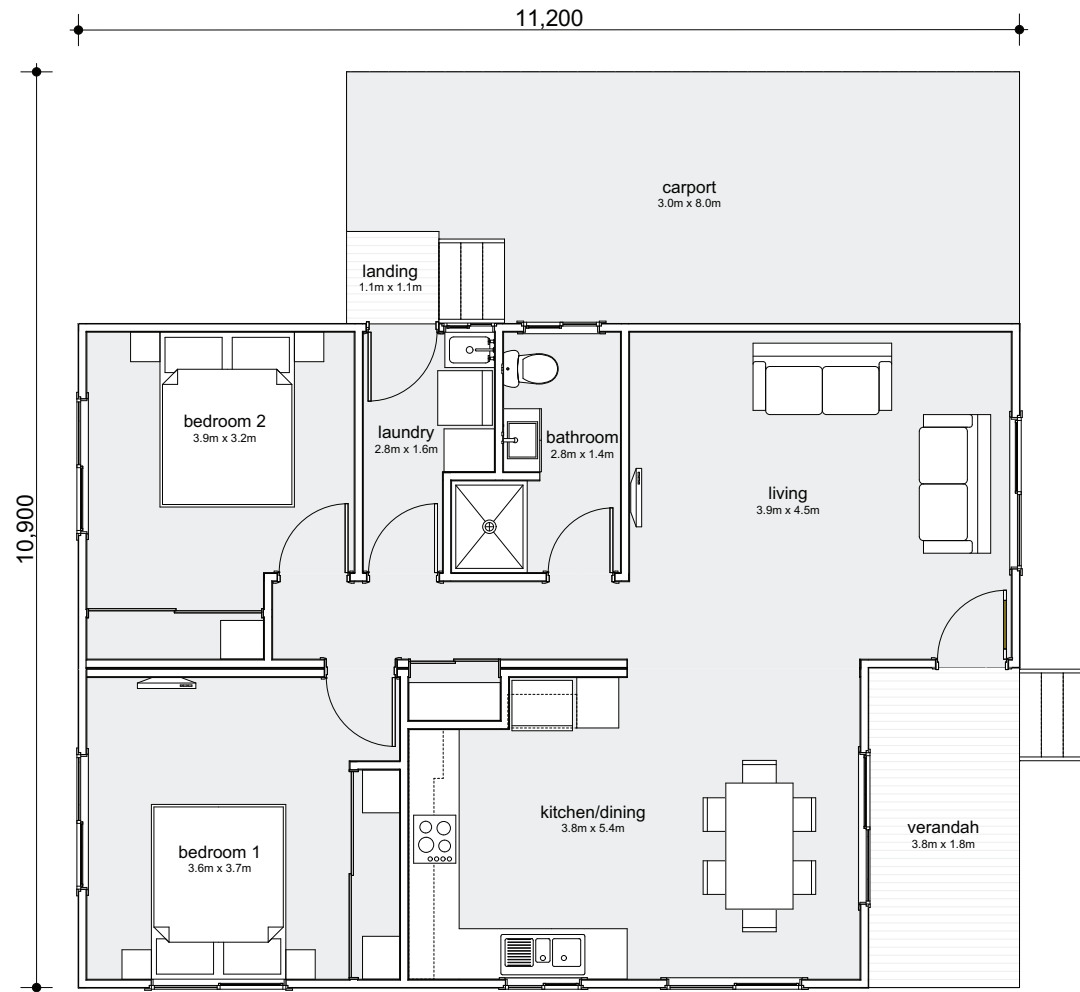


2 BEDROOM HOME



UNIPLAN GROUP

MODULAR - THE SMARTER WAY TO BUILD

LV2G

2  | 1  | 1 

Modules:	2
Total Area:	88.5m ²
Living:	17.55m ²
Verandah:	6.8m ²
Length:	11.2m
Width:	9m



Get in touch

We would be delighted to collaborate with you and exchange ideas for your upcoming project:

T: (02) 6773 8567 E: sales@uniplangroup.co

www.uniplangroup.com.au

These drawings are protected by copyright and remain the property of Uniplan Group. They may not be reproduced or copied without permission of Uniplan Group. All site dimensions are to be verified and confirmed by the client prior to the commencement of works.