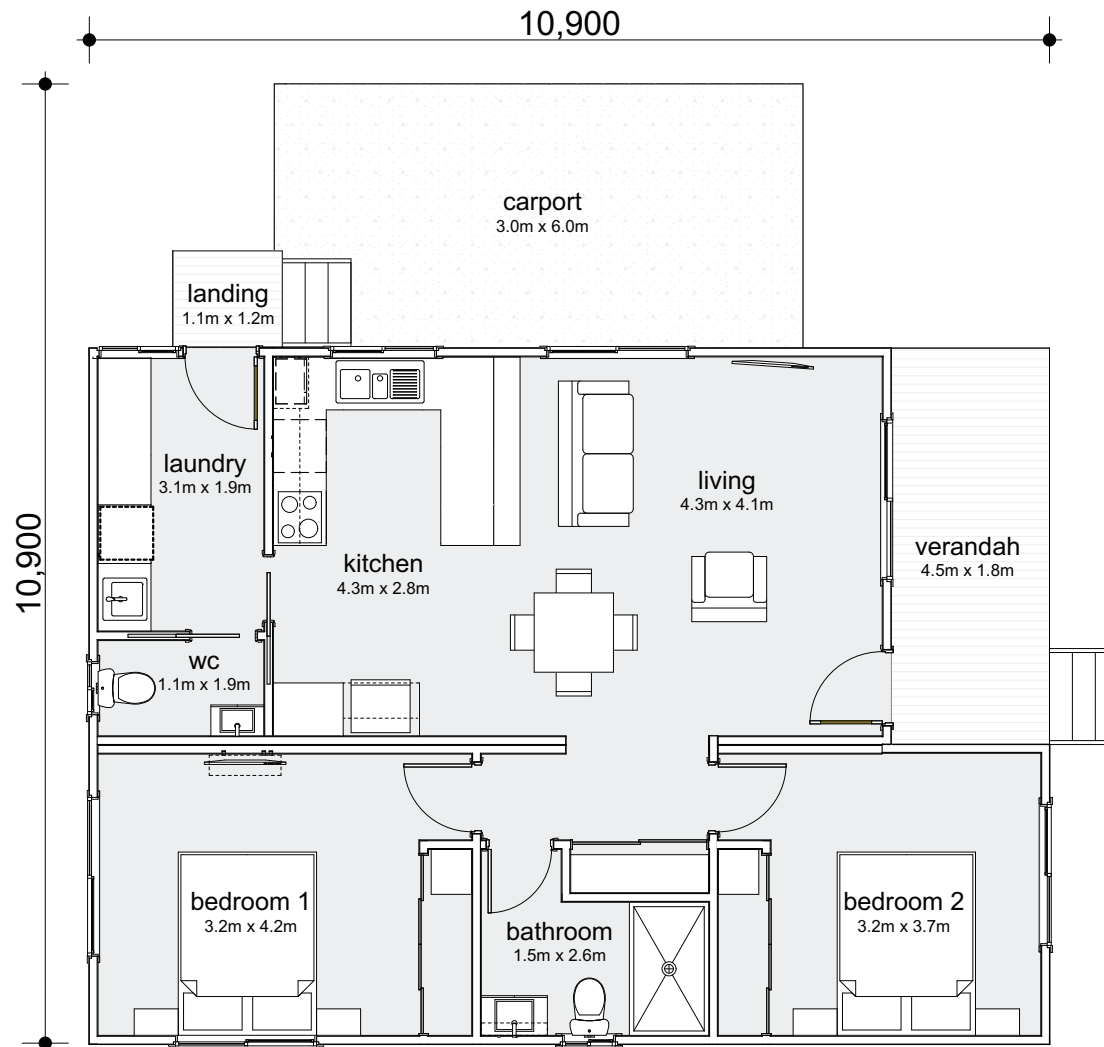


2 BEDROOM HOME



UNIPLAN GROUP

MODULAR - THE SMARTER WAY TO BUILD

LV2F

2 | 1 | 2

Modules:	2
Total Area:	86.11m ²
Living:	17.6m ²
Verandah:	8.1m ²
Length:	10.9m
Width:	7.9m



Get in touch

We would be delighted to collaborate with you and exchange ideas for your upcoming project:

T: (02) 6773 8567 E: sales@uniplangroup.co

www.uniplangroup.com.au